



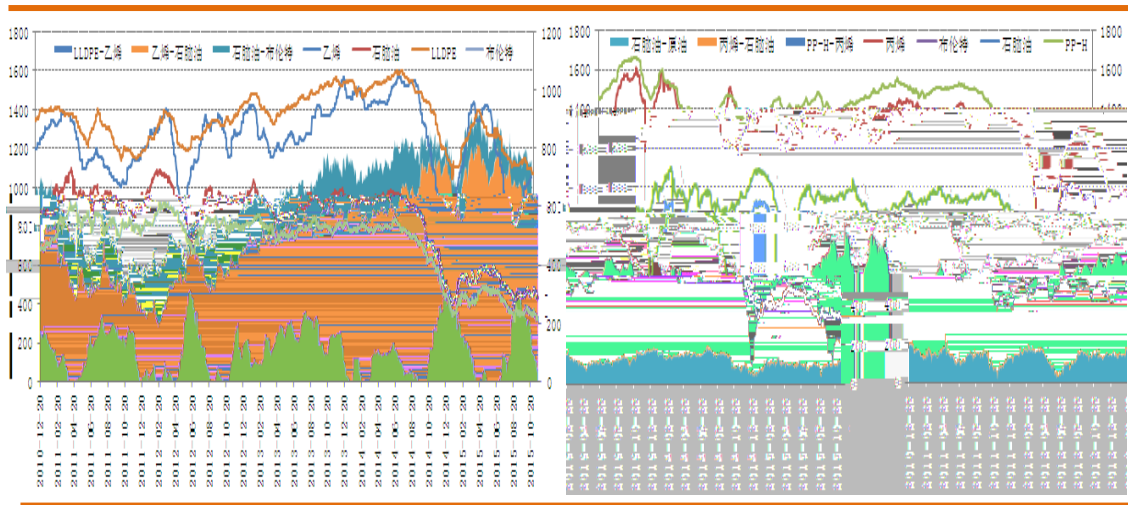
2015-11-25



CFR / 1055.5 / 1055.5 / 11 13 15 /
 10 / FOB 584.5 / 11 13 20
 / 11

3 LLDPE

4 PP



Wind

LLDPE 7042
 8350-8800 / PP T30S
 6200-6750 / PE 2605 / PP
 1121 /

5 LLDPE

6 PP

二、石化装置检修增多，市场供给或将缩小

LLDPE

45

11 24

30

11 16

30

11

10 12

11 6

30

LDPE

12

2426H

30

/ E

7042

11 16

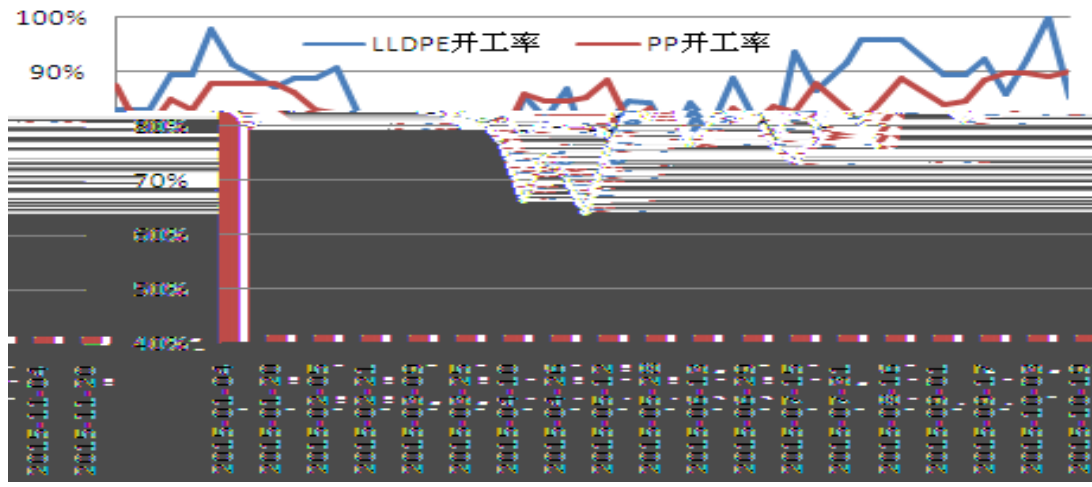
7-9

11 20

PP

9

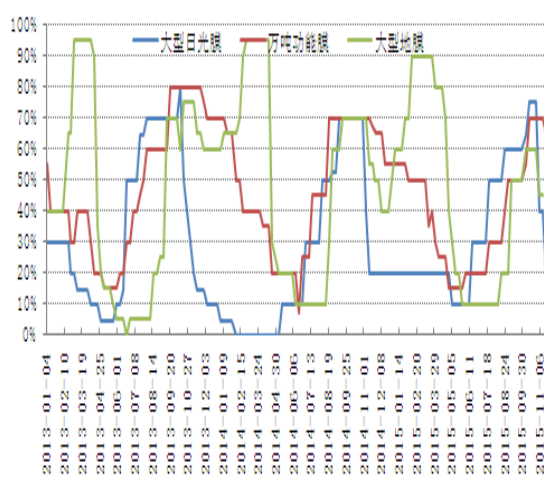
7



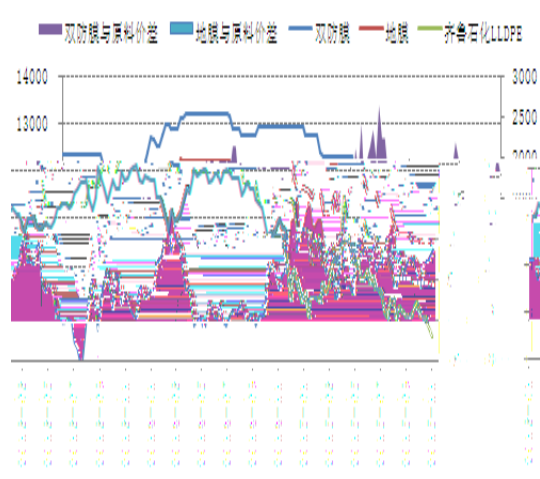
三、下游需求一般，回升力度有限

LLDPE 11
 10 55%
 5-7

8



9



PP

69%

85%

PP

7

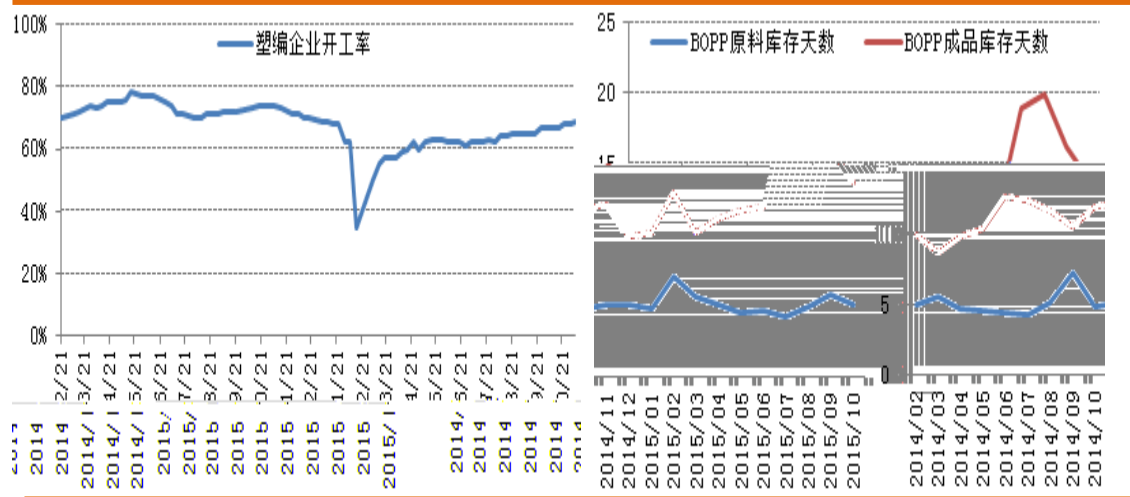
BOPP

BOPP

BOPP

10

11 BOPP



四、

LL/PP

LL PP

11

LLDPE

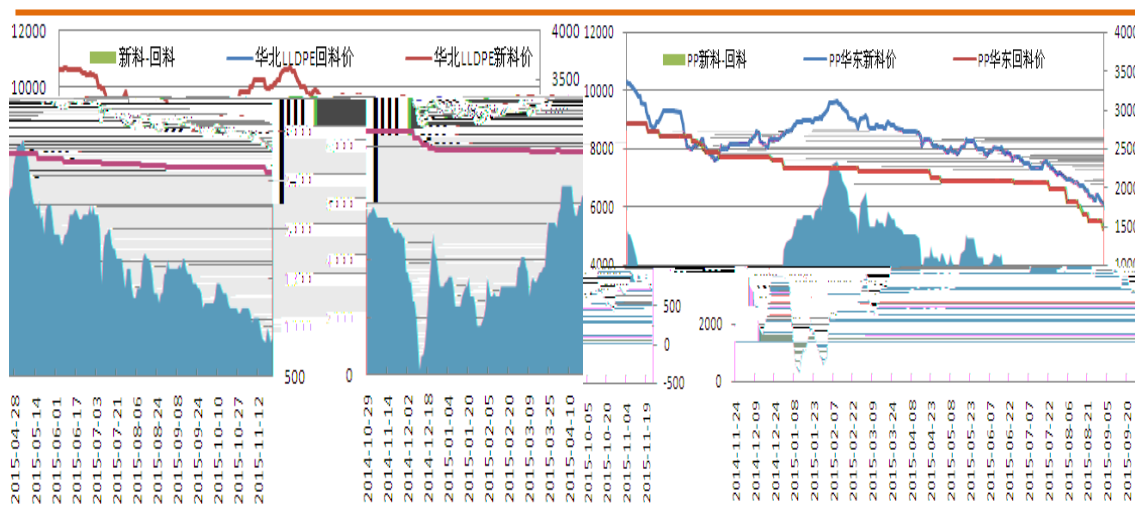
900 /

PP

850 /

12 LLDPE

13 PP



五、结论

PE

PP

BOPP

PE/PP

MA5

14 LLDPE

15 PP

